



**SUN-TWS**  
SUN TYRE & WHEEL SYSTEMS  
SRI LANKA - INDIA

# Solid Resilient Tyres



**NUMA**

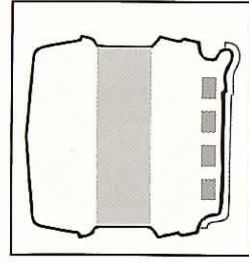
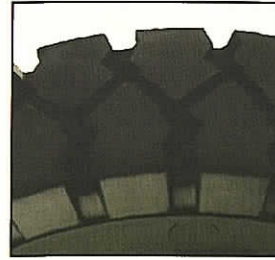
Presenting the NUMA platform of solid industrial resilient tyres - Premium & High performance - created to take your work head-on and never let you down.

The ultimate grip, even on less than perfect surfaces

- Long life
- Superior ride comfort
- Low heat build-up to withstand extreme wear and tear
- High load carrying capacity
- Less maintenance for forklifts
- Less rolling resistance
- Absolute stability
- Efficient operation

### The design tells their story

In the design of the tyres, our EDC has integrated layers of specially formulated compounds of varying hardness and physical properties to meet the performance standards of each end product. Compounds and designs are carefully selected to meet the diverse application requirements under exacting work conditions.



### Tread

The wear-resistant compound combined with the unique tread design ensures improved stability, traction and braking in both dry/wet conditions.

### Centre (absent in a 2 stage tyre)

The resilient softer center cushion compound is designed to reduce heat build up and rolling resistance and increase life of a tyre. The elastic property absorbs shock from being transmitted to the equipment, giving drive comfort, absolute safety and increased truck life through reduced vibration.

### Hard Base

The Hard Base area uses high durometer compounds with steel creel beads or hoop rings or with a matrix of nylon tyre cord fabric/rubber compound to provide firm grip in the rim seating area and thus eliminating any spinning problems.

### Numa's advantages

The NUMA platform of solid industrial tyres has been designed to give you the very best in technical performance that meets requirement. These tyres have been designed from the ground up with a hard wearing tread and wide footprint and have several important features:

- All tyres conform rigidly to ETRTO (European Tyre and Rim Technical Organization) and US-TRA (US Tyre and Rim Association) specifications.
- Numa tyres are offered in wide range of constructions and compounds to cater to an amazing spectrum of material handling applications. A choice of normal ride centre compound for low rolling resistance or softride centre compound for extra drive comfort.
- Apart from our comprehensive size range with rim width options, our EDC is ready to provide customized constructions and new sizes for customer problems.
- The square shoulder tread design provides better contact area and wider footprint and the curved tread edges prevent damage due to impact load. The optimum tread skid depth gives longer life.
- A lesser sidewall angle provides more tread width and better stability in operation.
- Available options for steel creel beads, hoop rings and hard rubber base compound ensuring a firm fit with the rim.
- All markings conform to international standards. Customers seeking for private label manufacture will be pleased with options for their own proprietary markings of BRAND, SIDEWALL marking and BARCODE sticker.
- Total traceability from start to finish, identified by type mark, embossed stencil number and barcode sticker.
- A comprehensive physical and chemical testing laboratory to ensure that the tyres are manufactured to a consistent high quality standard.

## Tyre Sizes and Specifications

TYRE SIZE	TYRE SIZE (METRIC)	RIM	TREAD	Tyre dimensions in mm				Tyre load capacity on fork lifts, kg at 25kmph	
				Outer Dia.	Sidewall width	Tread width	Load wheel	Steer wheel	
3.00 - 4		2.10	RIB	245	85	75	260	195	
3.50 - 4		2.10	RIB	250	89	83	260	195	
4.00 - 4		2.50	LUG	300	92	84	535	412	
3.50 - 5		3.00	RIB	300	100	90	900	690	
4.00 - 8		2.75, 3.00	LUG, RIB	402	103	86	950	730	
4.00 - 8		3.75	RIB	405	119	86	950	730	
12x3 1/2 - 8		3.00	SM	308	98	87	850	650	
	100/80-8	2.50	SM	360	105	90	1,000	770	
15X4 1/2 - 8	125/75-8	3.00	LUG	368	105	90	1,040	800	
15X4 1/2 - 8	125/75-8	3.00	SM	378	110	100	1,040	800	
5.00 - 8		3.00	LUG	450	120	110	1,415	1,090	
5.00 - 8		3.75	RIB	450	125	110	1,415	1,090	
16X6 - 8	150/75-8	4.33	LUG	406	140	125	1,270	975	
17X7 - 8		4.33	SM	430	150	134	2,000	1,540	
18X7 - 8	180/70-8	4.33	LUG	450	157	142	2,145	1,650	
6.00 - 9	140/55 - 9	4.00	LUG	376	125	110	1,170	900	
21X8 - 9	200/75-9	6.00	LUG	520	138	120	1,865	1,450	
			LUG	517	188	157	2,755	2,120	
6.50 - 10	200/50-10	6.50	LUG	454	190	160	2,470	1,900	
7.50 - 10		5.00, 5.50	LUG	566	160	140	2,340	1,800	
23X9 - 10	225/75-10	6.50	LUG	630	170	150	3,070	2,360	
			LUG	580	194	178	3,160	2,430	
7.00 - 12		5.00	LUG	646	172	150	2,920	2,240	
23X10 - 12		8.00	LUG	580	232	200	3,770	2,900	
27X10 - 12	250/75-12	8.00	LUG	672	240	200	3,900	3,000	
23X5 - 13		3.75	LUG	605	122	102	1,495	1,150	
7.00 - 15		5.50	LUG	705	180	158	3,545	2,725	
7.50 - 15		5.50, 6.00, 6.50	LUG	736	193	168	3,900	3,000	
8.15 - 15 (28X9-15)	225/75-15	7.00	LUG	678	221	190	3,445	2,650	
8.25 - 15		6.50	LUG	808	192	173	4,750	3,650	
2.50 - 15	250/70-15	7.00, 7.50	LUG	706	220	190	4,745	3,650	
3.00 - 15	315/70-15	8.00	LUG	806	242	223	5,850	4,500	
28X12.5-15	345/45-15	9.75	LUG	705	275	255	5,525	4,250	
	355/65-15	9.75	LUG	810	285	265	7,000	5,450	
7.50 - 16	400/60-15	11.00	LUG	810	318	298	8,970	6,900	
8.25 - 16		5.50, 6.00, 6.50	LUG	736	193	168	3,900	3,000	
		5.50, 6.00	LUG	808	192	173	4,750	3,650	
7.50 - 20		6.00	LUG	870	200	175	3,900	3,250	
8.25 - 20		6.50	LUG	915	200	180	4,380	3,650	
	355/50-20	10.00	SM	810	285	265	8,970	6,900	
9.00 - 20		6.50, 7.00	LUG	972	226	191	5,400	4,500	
10.00 - 20		7.00, 7.50, 8.00, 8.50	LUG	1,004	250	203	6,000	5,000	
10.00 - 20		7.50, 8.00, 8.50	SM	1,050	265	235	6,000	5,000	
11.00 - 20		7.50, 8.00, 8.50	SM	1,050	265	235	6,000	5,000	
12.00 - 20		8.00, 8.50	LUG	1,080	255	232	7,560	6,300	
12.00 - 20		8.00, 8.50	SM	1,140	295	250	7,560	6,300	
13.00 - 20		8.00, 8.50	SM	1,140	295	250	7,560	6,300	
12.00 - 24		8.50	LUG	1,165	265	230	8,040	6,700	
12.00 - 24		10.00	LUG	1,165	285	245	8,280	6,900	
14.00 - 24		10.00	LUG	1,275	308	270	11,100	9,250	
14.00 - 25		10.00	LUG	1,275	308	270	11,100	9,250	

**Notes:**

All dimensions are nominal and we reserve the right to make changes any time without notice

1. Service life depends on severity of operating conditions
2. Tyre usage should follow ETRTO or US-TRA norms for operations
3. Option for Normal ride indicates a low-rolling resistance configuration
4. Option for Softride indicates an extra-soft center compound for drive comfort
5. Vehicles fitted with Non-marking tyres must be properly earthed

All Numa tyres are available with Steel reinforcement (bead wires or creel beads). All tyre types also available in SOFT-RIDE construction for extra ride comfort



### Tyre Construction Details

NUMA	M1	P1	P3
<b>Grade</b>	STANDARD	PREMIUM	XTRA PREMIUM
<b>Design</b>	3-stage, Rubber tread, Soft centre compound	3-stage, Premium Natural Rubber tread,	3-stage, Specially formulated Rich Natural Rubber tread, Extra soft centre compound
<b>Ride</b>	Superior ride comfort	Superior ride comfort	Exceptional ride comfort
<b>Operating Conditions</b>	Heavy duty, continuous use	Heavy duty, continuous use	Severe operating conditions
<b>Advantages</b>	Work horse design, Low rolling resistance, Wide foot print	Low rolling resistance, Long operating life	Exceptional design to tackle the Wide foot print, Long operating life



**SUN-TWS**  
SUN TYRE & WHEEL SYSTEMS  
SRI LANKA - INDIA

#### Corporate Office:

180 Mount Road, Chennai 600 006, India. Phone: India: +91 44 4385 7129,  
USA: +1 919 300 7517, UK: +44 20 3371 9132 Email: [crm@sun-tws.com](mailto:crm@sun-tws.com)

#### Manufacturing locations:

Plant #1  
A1-F3/A, New Sidco Industrial Estate,  
Maraimalainagar 603 209, India

Plant #2  
Lot 2, Block B, Biyagama Export  
Processing Zone, Colombo, Sri Lanka

Plant #3  
7/B1, Sipcot Industrial Complex,  
Pudukottai, Tamil Nadu, India